

2026 SYLLABUS

CARNIVAL

DANCE CHALLENGE

SOLOS DUOS TRIOS



ENTRIES WILL CLOSE EARLY ONCE THE EVENT REACHES FULL CAPACITY. IF YOU HAVE ANY QUERIES, PLEASE EMAIL US AT CONTACT@CARNIVALDANCE.COM.AU
TO VIEW OUR 2026 TOUR DATES AND DETAILS, HEAD TO WWW.CARNIVALDANCE.COM.AU

ENTRY FEES

SOLOS

SOLO (1 PERFORMER)

THIS FEE INCLUDES: **\$49**

- MUSIC STORAGE
- VOICE/ VIDEO CRITIQUE SOFTWARE
- MUSIC LICENSING FEES
- NECESSARY INSURANCES
- NO FEE SECTION CHANGES
(UP TO 4 WEEKS BEFORE THE COMP)

DUOS \$58 & TRIOS

DUOS/TRIO (2-3 PERFORMERS)

THIS FEE INCLUDES:

- MUSIC STORAGE
- VOICE/ VIDEO CRITIQUE SOFTWARE
- MUSIC LICENSING FEES
- NECESSARY INSURANCES

IMPROVISATION \$25

ALL ENTRANTS IN THIS SECTION WILL LISTEN TO THE SAME
PIECE OF MUSIC ONCE RIGHT BEFORE THEY PERFORM
ON STAGE. THE DANCERS IN THE SECTION WILL PERFORM
ON STAGE TOGETHER. LARGER SECTIONS WILL BE SPLIT
INTO SMALLER GROUPS IF NECESSARY.

CHAMPIONSHIP \$58

DANCER MUST HAVE QUALIFIED BY PERFORMING THREE
SOLOS - ALL IN OPEN SOLO SECTIONS.

CHAMPIONSHIP ROUTINE MAY BE A REPEAT OR AN UNSEEN
ROUTINE. THE ROUTINE MUST BE DETERMINED BEFORE THE
EVENT, SO WE HAVE THEIR CHOSEN MUSIC UPLOADED IN
ADVANCE.

COMPULSORY COMPETITOR PASS

\$40

INCLUDES:

- DIGITAL LIVE PROGRAM
- VIDEO/AUDIO CRITIQUE
- FREE DOOR ENTRY FOR SPECTATORS
- DEDICATED BACKSTAGE MANAGER
- DEDICATED EVENTS MANAGER
- SOUND TECHNICIAN
- INDUSTRY LEADING ADJUDICATOR
- ITOTE BAG FROM CARNIVAL.
CARNIVAL TOTE BAG

ALL PRICES ARE
INCLUSIVE OF GST.

PAYMENT PLANS

PAYMENT PLANS ARE AVAILABLE WHEN
REGISTERING THROUGH THE CARNIVAL
APP.

AT CHECK OUT YOU WILL HAVE THREE
PAYMENT PLAN OPTIONS:

- PAYPAL - PAY IN 4
- KLARNA
- ZIP PAY

ALL OF THESE ALLOW YOU TO SPLIT YOUR
BILL INTO MONTHLY/WEEKLY PAYMENTS.

[APP.CARNIVALDANCE.COM.AU](https://app.carnivaldance.com.au)

ADJUDICATION & VENUE

ADJUDICATION

ALL PERFORMERS WILL RECEIVE THEIR VIDEO CRITIQUE FILES NO MORE THAN 48 HOURS AFTER THE EVENT. CARNIVAL DANCE CHALLENGE IS ADJUDICATED BY THE VERY BEST - CURRENT AND FORMER PROFESSIONAL DANCERS, CHOREOGRAPHERS, AND INDUSTRY LEADERS. WE'RE COMMITTED TO PROVIDING YOU WITH THE MOST SOUGHT AFTER AND RESPECTED ADJUDICATORS AND PERFORMERS IN TODAY'S INDUSTRY.



OUR GOAL IS TO CHOOSE TOP-TIER VENUES THAT ARE FULLY EQUIPPED WITH ALL THE NECESSARY FACILITIES TO CREATE A MEMORABLE EXPERIENCE FOR BOTH PERFORMERS AND AUDIENCES.

TO SEE WHAT VENUES ARE BOOKED IN FOR OUR 2026 TOUR, HEAD TO OUR WEBSITE WWW.CARNIVALDANCE.COM.AU



VENUE

AGES

BABIES	4 YEARS & UNDER
---------------	----------------------------

MINIS	6 YEARS & UNDER
--------------	----------------------------

PETITES	8 YEARS & UNDER
----------------	----------------------------

PRE JUNIORS	10 YEARS & UNDER
--------------------	-----------------------------

JUNIORS	12 YEARS & UNDER
----------------	-----------------------------

TEENS	14 YEARS & UNDER
--------------	-----------------------------

SENIORS	15 YEARS & OVER
----------------	----------------------------

AGE CUT OFF IS TAKEN FROM THE 1ST JANUARY 2026





LEVELS FOR PROTEGE & ELITE ARE SPECIFIC TO GENRE. E.G. YOU COULD BE RESTRICTED FOR CLASSICAL BUT OPEN FOR HIPHOP.

LEVELS FOR FIRST YEAR ON STAGE ARE NOT GENRE SPECIFIC. THIS LEVEL IS JUST FOR DANCERS NEW TO COMPETING IN SOLOS.

(NOTE: 6/U & 15/O DO NOT HAVE FYOS)

LEVELS

ALL ABILITIES

DANCERS WITH DIVERSE ABILITIES, INCLUDING NEURODIVERSE INDIVIDUALS AND THOSE WITH DISABILITIES.

FIRST YEAR ON STAGE (FYOS)

IT IS THE DANCERS FIRST 12 MONTHS ON STAGE AS A SOLOIST.

PROTÉGÉ

DANCER HAS NOT WON FIRST PLACE IN THE PAST 2 YEARS.

(IF THEY WERE IN A SECTION OF 3 OR LESS, THEY CAN REMAIN IN PROTÉGÉ.

ELITE

HAS WON FIRST PLACE IN THE PAST 2 YEARS IN A SECTION OF 4 OR MORE

DANCERS

DANCER MUST NOTIFY US AT LEAST 2 WEEKS BEFORE THE COMPETITION IF THEY NEED TO BE MOVED UP A LEVEL.

GENRES

BALLET

A ROUTINE COMPRISED OF CLASSICAL STEPS & BALLET TECHNIQUE. BALLET SHOES MUST BE WORN.

DEMI CHARACTER

DEMI CHARACTER MUST INVOLVE OR RESEMBLE A CHARACTER DANCE THAT USES CLASSICAL TECHNIQUE AS A BASIS FOR INTERPRETATION.

NEO CLASSICAL

CHOREOGRAPHY WITH EMPHASIS ON BALLET MOVEMENT WITH MINIMAL COSTUME DESIGN AND STAGE SCENERY.

LYRICAL

A FREE, EXPRESSIVE STYLE OF DANCING. IT INSPIRES EXPRESSION OF STRONG EMOTIONS FROM THE LYRICS OF THE SONG.

TRADITIONAL CONTEMPORARY

A ROUTINE WHERE THE MOVEMENTS HAVE ARISEN FROM THE TRADITION OF THIS DANCE STYLE.

COMMERCIAL CONTEMPORARY

CHOREOGRAPHY CONTAINING INTERPRETIVE DANCE USING BALANCE AND CONTROL WITH A MORE CURRENT AND COMMERCIAL FLARE.

STUDENT CHOREOGRAPHY

CAN PERFORM ANY STYLE. NEEDS TO BE CHOREOGRAPHED BY THE ENTRANT ONLY.

SONG & DANCE

A THEATRICAL PERFORMANCE (SUCH AS A VAUDEVILLE PERFORMANCE) COMBINING SINGING AND DANCING

ACRO

ACRO DANCE IS A STYLE OF DANCE THAT COMBINES CLASSICAL DANCE TECHNIQUE WITH PRECISION ACROBATIC ELEMENTS.

MUSICAL THEATRE

A MUSICAL THEATRE SONG CHOICE WITH BOTH DANCE AND THEATRIC ELEMENTS WITH A STRONG FOCUS ON CHARACTERISATION.

BROADWAY

A JAZZ-BASED PERFORMANCE FILLED WITH BROADWAY STYLE DANCING AND MUSIC.

HIP HOP

A RANGE OF STREET DANCE STYLES PRIMARILY PERFORMED TO HIP HOP MUSIC OR THAT HAVE EVOLVED AS PART OF HIP HOP CULTURE.

JAZZ

CHOREOGRAPHY CONTAINING MOVEMENTS BASED ON JAZZ TECHNIQUE.

HEELS

A ROUTINE PERFORMED IN A HEEL SHOE.

ANY STYLE

CAN PERFORM ANY STYLE OF DANCE (CANNOT REPEAT DANCE FROM ANOTHER CATEGORY).

SLOW / STRAIGHT TAP

IS A DANCE STYLE CHARACTERIZED BY DELIBERATE AND CONTROLLED FOOT MOVEMENTS PERFORMED AT A SLOWER TEMPO.

FAST TAP

QUICK, RHYTHMIC FOOT MOVEMENTS PERFORMED AT A RAPID TEMPO. THIS FORM OF TAP DANCING EMPHASIZES SPEED, AGILITY, AND INTRICATE FOOTWORK



IMPROVISATION

The background of the entire page features two dancers in dynamic poses. One dancer, wearing a red and pink outfit, is in a high, arched position with one leg extended upwards and arms reaching out. The other dancer, wearing a dark green outfit, is in a lower, more compact pose, possibly a backbend or a low lunge, with one leg extended outwards. The background is a mix of black and pink, with some abstract, flowing lines.

WHAT TO WEAR?

PLAIN DANCE ATTIRE APPROPRIATE FOR THE GENRE E.G. LEOTARD, CROP AND SHORTS, HIPHOP CAN WEAR SOMETHING A LITTLE BAGGIER IF PREFERRED.

NO COSTUMES OR BLING.

WHO SHOULD DO IMPROVISATION?

IMPROVISATIONS ARE AN EXCELLENT WAY TO DEVELOP CONFIDENCE ON THE STAGE AND ENHANCE YOUR MUSICALITY AND CREATIVITY. ALL PERFORMERS NO MATTER THE SKILL LEVEL ARE ENCOURAGED TO COMPETE IN IMPROVISATION.

HOW DOES IT WORK?

A SONG IS RANDOMLY SELECTED IN THE GENRE OF THE SECTION.

THE SONG IS APPROX 45 SEC- 1 MINUTE (DEPENDING ON AGE).

PERFORMERS WILL GET TO HEAR THE SONG ONCE BEFORE GOING ON STAGE AS A GROUP AND PERFORMING THEIR IMPROVISATION.



AWARDS

TROPHIES

GIFT VOUCHERS

MEDALS

SASH'S

SCHOLARSHIPS

TIARAS

CASH PRIZES

& MORE

SOLO SECTIONS

1ST, 2ND, 3RD, AND HIGHLY COMMENDED POSITIONS
WILL BE AWARDED BASED AT THE ADJUDICATORS'
DISCRETION.

HIGHEST POINT SCORER

THE PERFORMER WITH THE HIGHEST SCORE IN
EACH AGE GROUP.

OUTSTANDING CHOREOGRAPHY

1 ROUTINE IN EACH AGE GROUP WILL
BE AWARDED MOST OUTSTANDING
CHOREOGRAPHY.

HEART OF CARNIVAL

THIS IS CHOSEN BY CARNIVAL STAFF
AND AWARDED TO A PERFORMER WHO
SHOWS GREAT SPORTSMANSHIP AND A
TRUE LOVE FOR DANCE.

RISING STAR

THIS IS AWARDED TO A
PERFORMER IN A RESTRICTED
SECTION THAT SHOWS GREAT
POTENTIAL AND STAR QUALITY.

**ALL AWARDS MUST
BE COLLECTED AT
THE AWARDS
CEREMONY. WE
CANNOT ARRANGE
SHIPMENT AFTER THE
EVENT.**

SCORES

EVERY DANCER WILL
RECEIVE A VOICE CRITIQUE &
SCORED IN THE BELOW
RANKINGS.



**BLACK
DIAMOND**

SCORE 96 & ABOVE

DANCERS WHO ARE AWARDED A BLACK DIAMOND SCORE WILL QUALIFY
FOR THE NATIONAL FINALS IN THE ELITE DIVISION AND WILL
AUTOMATICALLY BE INVITED TO PERFORM AT THE GALA NIGHT.



DIAMOND

SCORE BETWEEN 90 – 95



EMERALD

SCORE BETWEEN 86 – 89

DANCERS WHO ARE AWARDED A DIAMOND OR EMERALD SCORE WILL
AUTOMATICALLY QUALIFY FOR THE NATIONAL FINALS IN THE ELITE DIVISION.



RUBY

SCORE BETWEEN 80 – 85



GOLD

SCORE BETWEEN 77 – 80

DANCERS WHO ARE AWARDED A RUBY OR GOLD SCORE WILL
AUTOMATICALLY QUALIFY FOR THE NATIONAL FINALS IN THE PROTÉGÉ
DIVISION.



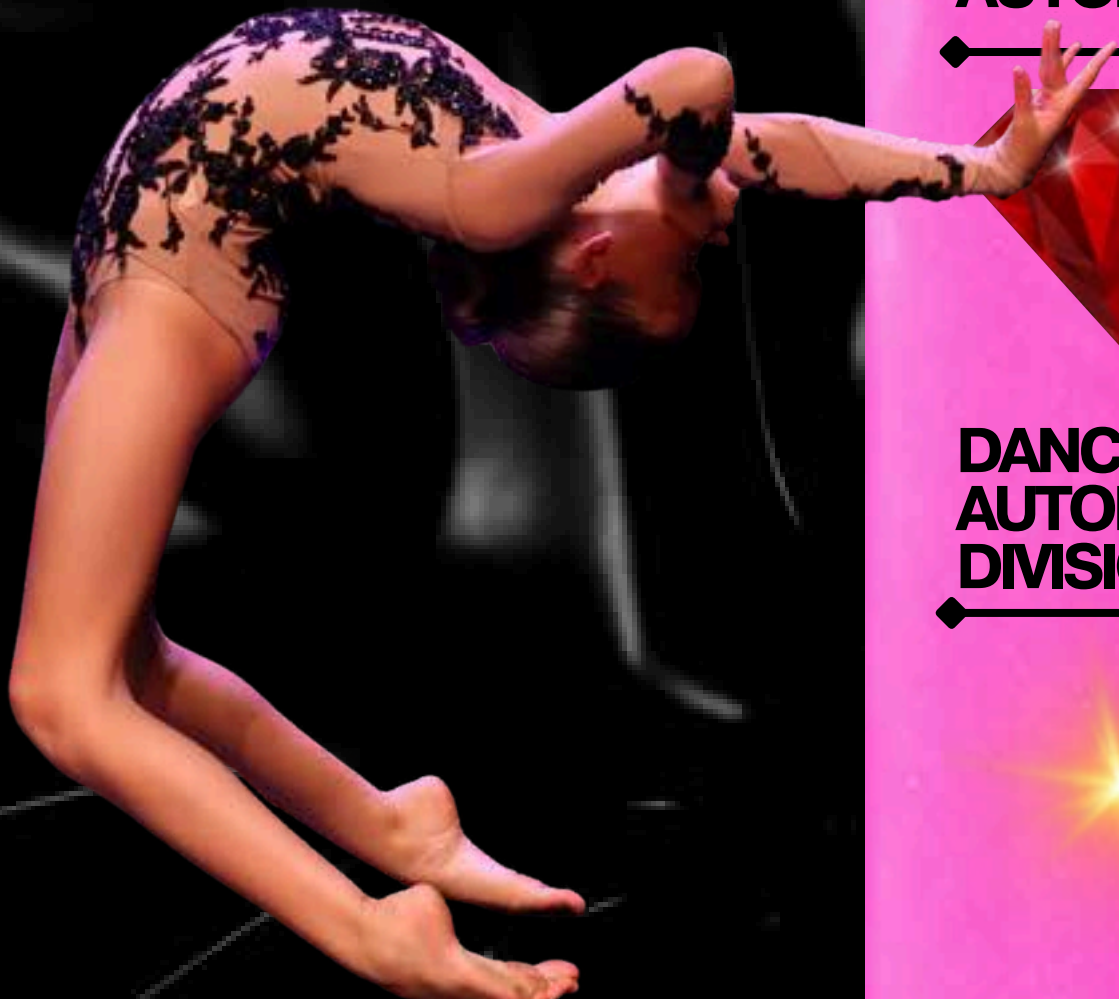
RISING STAR

SCORE BETWEEN 65 – 76

TOP 10 HIGHEST POINT SCORERS

THE TOP 10 HIGHEST POINT
SCORERS IN EACH AGE
GROUP WILL QUALIFY TO
COMPETE IN THE “HIGHEST
POINT SCORERS” SECTION AT
THE NATIONAL FINALS.

FROM THERE, THE TOP 5
PERFORMERS FROM THIS
SECTION WILL THEN BE
INVITED TO SHOWCASE THEIR
ROUTINES AT THE GALA
NIGHT.



**DANCER MUST HAVE
QUALIFIED BY
PERFORMING THREE
SOLOS IN THE ELITE
LEVEL.**

**CHAMPIONSHIP
ROUTINE MAY BE A
REPEAT OR AN
UNSEEN ROUTINE.**

\$58 THIS PRICE INCLUDES THE
CHAMPIONSHIP ENTRY ONLY.

CHAMPIONSHIPS



CHAMPION WINNER
WINNER OF CHAMPIONSHIP SECTION.

RUNNER UP
2ND PLACE IN CHAMPIONSHIP
SECTION.

MOST PROMISING
A PERFORMER WHO DEMONSTRATES
GREAT POTENTIAL AND SHOWCASE
THEIR PROMISE FOR FUTURE
SUCCESS.

WOW FACTOR
A STANDOUT PERFORMER WHO
IS TRULY ENTERTAINING &
CAPTIVATES AUDIENCES WITH
THEIR EXCEPTIONAL TALENT
AND CHARISMA.



BROADWAY BOUND

\$125

THIS PRICE IS TO BE CONSIDERED FOR THE MAJOR TITLE AT REGIONALS & QUALIFY FOR FINALS AWARD. THE 3 QUALIFYING SECTIONS ARE TO BE PAID FOR SEPERATELY.

VOCAL SOLO

THE DANCER MUST PERFORM A VOCAL SOLO.

BROADWAY / MUSICAL THEATRE SOLO

THE DANCER MUST PERFORM A BROADWAY OR MUSICAL THEATRE SOLO.

IMPROVISATION

THE DANCER MUST PARTICIPATE IN THE MUSICAL THEATRE IMPROVISATION SECTION. THEY WILL LISTEN TO A 30-60SEC PIECE OF MUSIC BEFORE IMPROVISING TO THIS MUSIC ON STAGE.

THE ADJUDICATOR WILL ACCUMULATE AN OVERALL SCORE. THE DANCER WITH THE HIGHEST SCORE WILL BE TITLED “BROADWAY BOUND”

TO QUALIFY FOR THE ‘BROADWAY BOUND’ TITLE, THE DANCER MUST ENTER THE 3X SECTIONS BELOW:

- **1 X MUSICAL THEATRE OR BROADWAY SOLO SECTION**
- **1 X VOCAL SECTION**
- **1X MUSICAL THEATRE IMPROVISATION SECTION**

ADDITIONAL AWARDS \$15 PER TITLE

CAN BE ADDED TO ANY ROUTINE PERFORMED THROUGHOUT THE DAY AND ADJUDICATED IN THEIR SECTION (THIS EXCLUDES IMPROVISATIONS, DUOS & TRIOS).

A WINNER WILL BE SELECTED IN EACH AGE GROUP AND WILL BE AWARDED ONCE ALL QUALIFYING ROUTINES HAVE PERFORMED THROUGHOUT THE SESSION.

(THIS IS NOT COMPULSORY).

THE ADD ON TITLES WILL DISPLAY NEXT TO EACH CHOSEN ENTRY IN THE PROGRAM AND THE ADJUDICATOR WILL MARK THESE ON A SEPARATE SCORE SHEET.



AWARDED TO A PERFORMER WHO
DISPLAYS EXCEPTIONAL STAGE
PRESENCE AND JUDGED ON
ENTERTAINMENT QUALITY ONLY.

THE ADD ON SECTIONS ARE
ONLY VALID IF THE
EQUIVALENT SOLO
SECTION HAS BEEN
ENTERED AND PAID FOR.

**MOST
OUTSTANDING
ENTERTAINER**

AWARDED TO A PERFORMER WITH
THE MOST OUTSTANDING
COSTUME.

**MOST
OUTSTANDING
COSTUME**

CARNIVAL MASTERCLASSES

THESE WILL BE PROMOTED THROUGH
EMAILS & SOCIAL MEDIA, WHERE WE WILL
PROVIDE A TRYBOOKING LINK TO BOOK IN
THE LEAD UP TO THE EVENT.

**ONE HOUR
MASTERCLASSES
WITH INDUSTRY
LEADING
CHOREOGRAPHERS**

\$30 PER TICKET

**JUNIOR & SENIOR
CLASSES**

**MASTERCLASSES WILL NOT
BE OFFERED AT ALL
CARNIVAL COMPETITIONS,
AS IT HIGHLY DEPENDS ON
VENUE AVAILABILITY AND
THE CAPACITY TO HOST
CLASSES ALONGSIDE THE
COMPETITION SCHEDULE.**

**WHEN AVAILABLE, CLASSES
WILL BE SCHEDULED IN
CONJUNCTION WITH THE
AGE GROUPS FEATURED IN
THE COMPETITION
PROGRAM.**



IMPORTANT

NOTES

TIME LIMIT

SOLOS, DUOS & TRIOS

3 MINUTE MAXIMUM

TIME LIMITS MUST BE STRICTLY ADHERED TO OR PENALTIES WILL APPLY.

CHECK IN

1 HOUR BEFORE SECTION

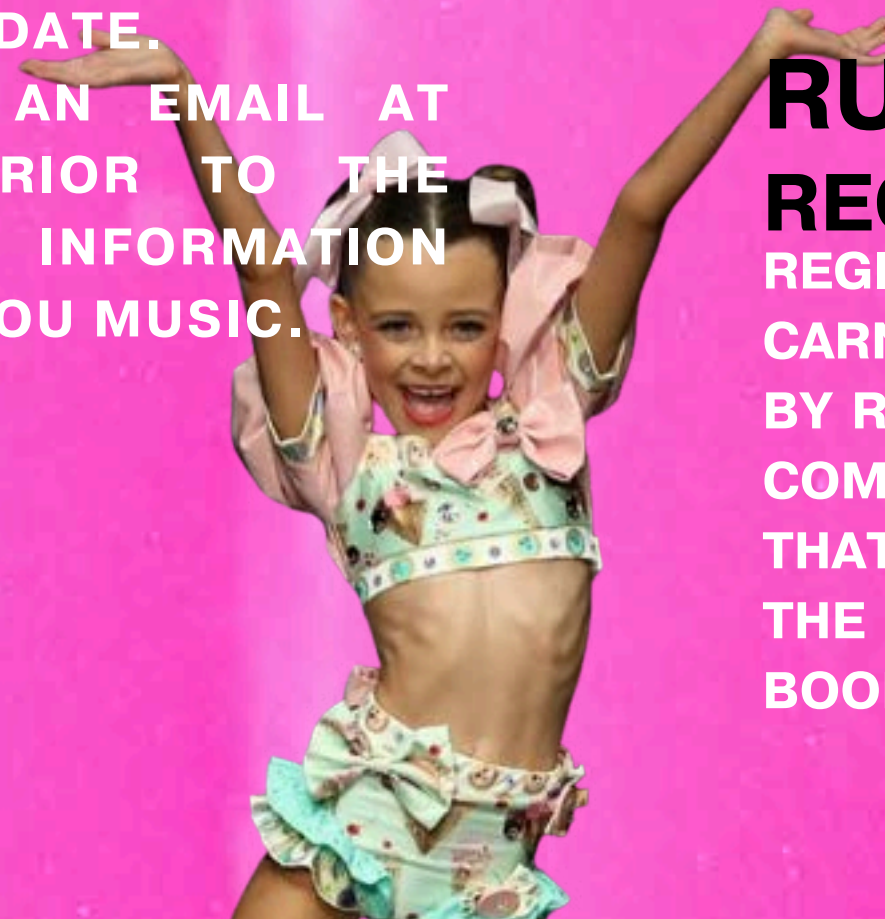
ARRIVE 1 HOUR BEFORE SCHEDULED TIME. FOR DANCERS WHO ARE SCHEDULED TO PERFORM WITHIN THE FIRST 2 HOURS OF THE COMPETITION, THEY SHOULD BE PRESENT WHEN THE DOORS OPEN. PLEASE DO NOT ARRIVE BEFORE THE DOORS OPEN TIME.



MUSIC

UPLOAD TO CARNIVAL APP

ALL MUSIC MUST BE UPLOADED THROUGH THE CARNIVAL APP BEFORE THE CUT OFF DATE. YOU WILL RECEIVE AN EMAIL AT LEAST 1 MONTH PRIOR TO THE COMPETITION WITH INFORMATION ON HOW TO UPLOAD YOUR MUSIC.



PHOTOS/VIDEOS

PURCHASE AT THE EVENT

A PROFESSIONAL VIDEOGRAPHER AND PHOTOGRAPHER WILL BE AVAILABLE AT EACH EVENT. OUR MEDIA TEAM WILL CAPTURE ALL PERFORMANCE AND CAN BE PRE PURCHASED OR ORDERED AFTER THE EVENT.

RULES

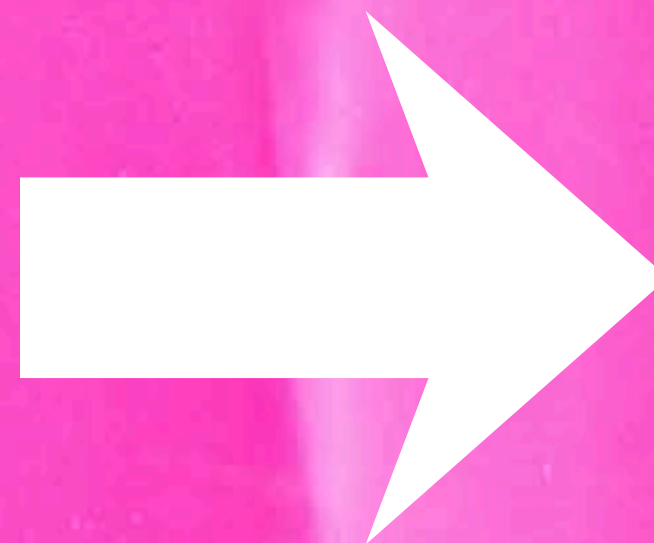
REGISTRATION

REGISTRATION IS THROUGH THE CARNIVAL APP OR COMPSONLINE. BY REGISTERING IN A CARNIVAL DANCE COMPETITION YOU ACKNOWLEDGE THAT YOU HAVE READ AND AGREE TO THE TERMS OUTLINED IN THE RULES BOOK.



2026

THE RULES



RULES & REGULATIONS

CREDIT AND REFUNDS:

IF A PERFORMER NEEDS TO WITHDRAW FROM A REGIONAL EVENT, THE PERFORMER OR THEIR PARENTS MUST INFORM CARNIVAL DANCE CHALLENGE AT LEAST TWO WEEKS BEFORE THE EVENT. IF WE CAN SUBSTITUTE THE WITHDRAWN ROUTINE WITH A PERFORMER FROM THE WAITLIST, WE WILL TRANSFER YOUR ENTRY TO A FUTURE COMPETITION. PLEASE BE AWARE THAT NO REFUNDS WILL BE PROVIDED FOR CHANGE OF MIND, WHETHER FOR PARTIAL OR FULL PAYMENTS.

IN THE CASE OF AN INJURY (NOT DUE TO ILLNESS), CARNIVAL DIRECTOR MAY USE THEIR DISCRETION FOR A TRANSFER TO FUTURE EVENT; HOWEVER, PROOF OF THE INJURY IS REQUIRED, AND A \$30 ADMINISTRATION FEE WILL BE CHARGED.

PERSONAL ITEMS:

CARNIVAL DANCE CHALLENGE, ITS DIRECTORS, STAFF AND ASSOCIATES SHALL IN NO WAY ASSUME RESPONSIBILITY FOR LOST POSSESSIONS OR THEFT OF ANY KIND AT ANY VENUE. PLEASE BE SAFE AND KEEP ANY PERSONAL ITEMS OF VALUE SAFE AT HOME.

PROPS:

PROPS MUST BE CARRIED ON STAGE BY THE PERFORMER OR YOUR OWN STAFF (INSTRUCTOR, PARENT, COACH, ETC.). THE PLACEMENT OF PROPS, MATS, ETC. MUST BE COMPLETED WITHIN 2 MINUTES OF THE END OF THE PRECEDING ACT. THE TIMING OF THE ACT WILL BEGIN AFTER THE 2 - MINUTE PREP TIME. PLEASE CONTACT OUR NATIONAL HEADQUARTERS IF YOU NEED FURTHER CLARIFICATION OF PROP GUIDELINES.

- NO DANGEROUS PROPS ARE ALLOWED ON STAGE. NO FORM OF PAINT, CHALK, LIQUID, POWDER, SAND, OR GEL MAY BE USED. ANYTHING THAT WOULD AFFECT OR DAMAGE THE DANCING SURFACE WILL BE SUBJECT TO IMMEDIATE DISQUALIFICATION. PERFORMERS MUST BE PREPARED TO COMPLETELY CLEAR THE STAGE OF ANY LOOSE ITEMS OR LITTER (FEATHERS, STREAMERS, PETALS, ETC.)

RULES & REGULATIONS

ADJUDICATION:

ADJUDICATORS WILL BE ANNOUNCED PRIOR TO THE EVENT. IN THE EVENT AN ANNOUNCED ADJUDICATOR CAN NOT MAKE IT FOR ANY REASON, CARNIVAL DANCE CHALLENGE RESERVES THE RIGHT TO ENGAGE A DIFFERENT ADJUDICATOR FOR THE EVENT.

THE ADJUDICATOR'S DECISION IS FINAL. ANY COMPETITOR WHO HAS BEEN REGULARLY TAUGHT BY THE ADJUDICATOR WITHIN THE PRECEDING SIX MONTHS MUST DECLARE THIS PRIOR TO THE COMMENCEMENT OF A COMPETITION. THESE PERFORMER WILL NOT BE ELIGIBLE TO PLACE AND WILL BE MARKED AS CRITIQUE ONLY. WHERE POSSIBLE WE WILL FIND AN ALTERNATIVE ADJUDICATOR. THIS EXCLUDES WORKSHOP CLASSES AND/OR SUBSTITUTES.

THE ADJUDICATOR HAS THE RIGHT TO WITHHOLD A PRIZE IF HE/SHE DOES NOT FEEL A SUFFICIENT STANDARD HAS BEEN REACHED. THE ADJUDICATOR MUST NOT BE APPROACHED BY ANY COMPETITOR/PARENT/DANCE TEACHER FOR ANY REASON OR THAT COMPETITOR WILL BE DISQUALIFIED. THE ADJUDICATOR MAY APPLY A PENALTY IF THE TIME LIMIT IS EXCEEDED.

PERFORMERS:

NO PERFORMER IS ALLOWED TO PERFORM IN THE FRONT STAGE AREA SURROUNDING THE JUDGES AND AUDIT TABLES, WHICH INCLUDES NO PROJECTING OR JUMPING ON OR OFF THE FRONT OF THE STAGE. ANY PERFORMER WHO BEGINS OFFSTAGE MUST MOVE TO THE STAGE AT SOME POINT DURING THE PERFORMANCE. NO LIFTS, TUMBLING, OR TRICKS OF ANY KIND AND OR PROPS ARE PERMITTED OFFSTAGE. NOTHING, WHICH MAY CAUSE ANY HARM OR DAMAGE TO A PERSON OR OBJECT, MAY BE INTENTIONALLY THROWN OR SHOT FROM THE STAGE.

ARRIVAL:

DOORS WILL OPEN APPROXIMATELY 30 MINUTES BEFORE THE COMPETITION'S SCHEDULED START TIME.

RULES & REGULATIONS

FAMILY FRIENDLY ACTS:

THE COMPANIES OF CARNIVAL DANCE CHALLENGE UNDERSTAND THE BROAD RANGE OF STYLES AND APPROPRIATENESS THAT DANCERS ARE EXPOSED TO IN OUR COUNTRY; HOWEVER, WE EXPECT EACH AND EVERY ROUTINE TO BE IN GOOD TASTE FOR VIEWING BY A “FAMILY-FRIENDLY” AUDIENCE. INAPPROPRIATE ROUTINES ARE NOT ACCEPTABLE AND, AT MINIMUM, WILL HAVE POINTS DEDUCTED TO NOT BEING ELIGIBLE FOR FINAL AWARDS AND/OR AT MOST BE DISQUALIFIED.

PAYMENT:

ACCOUNTS THAT ARE NOT PAID IN FULL AT LEAST 15 DAYS PRIOR TO THE COMPETITION DATE WILL NOT BE INCLUDED IN THE PREPARED COMPETITION SCHEDULE AND MAY NOT BE ACCEPTED. PLEASE NOTE THAT REGISTRATION ALONE DOES NOT GUARANTEE PLACEMENT IN AN EVENT AS PAYMENT MUST BE RECEIVED TO CONFIRM PLACEMENT IN THE EVENT. PLEASE NOTE THAT THE DANCER WILL NOT BE ALLOWED TO PERFORM UNTIL ALL ENTRIES ARE PAID IN FULL. ENTRIES WILL BE ACCEPTED ON A FIRST COME, FIRST SERVE BASIS. IF THE EVENT REACHES CAPACITY AND YOUR PAYMENT HAS NOT BEEN FINALISED IN THE REGISTRATION PROCESS, YOU MAY LOSE YOUR SPOT AND WILL BE MOVED TO A WAITLIST.

DRESSING ROOMS:

CARNIVAL DOES ATTEMPT TO BE FAIR IN ASSIGNING DRESSING ROOMS; HOWEVER, WHEN SPACE IS LIMITED, IT MAY BE NECESSARY FOR STUDIOS TO SHARE A DRESSING SPACE. PLEASE HONOR THESE PLACEMENTS AND SHARE THE SPACE. ENTRANTS ARE EXPECTED TO CHANGE COSTUMES QUICKLY (THREE NUMBERS SHOULD BE ADEQUATE IN MOST CASES). VALUABLES AND PERSONAL PROPERTY LEFT IN DRESSING AREAS IS LEFT AT THE RISK OF THE OWNER. CARNIVAL IS NOT RESPONSIBLE FOR ANY ITEMS IN THE DRESSING ROOMS. ANY DAMAGES INCURRED WILL BE THE RESPONSIBILITY OF THE STUDIO(S) DRESSING IN THAT SPACE. A SEPERATE DRESSING ROOM WILL BE PROVIDED FOR MALE DANCERS. STRICTLY NO MALES ARE ALLOWED TO ENTER THE FEMALE DRESSING ROOMS AT ANY TIME.

RULES & REGULATIONS

THEATRE:

NO EATING, DRINKING OR SMOKING IS PERMITTED IN THE THEATRE. FIRE EXITS MUST ALWAYS BE KEPT CLEAR. NO ENTRY/EXIT IS ALLOWED IN TO/OUT OF THE THEATRE AUDITORIUM WHEN AN ACT IS ON STAGE.

SPECTATORS:

ALL SPECTATORS ARE GIVEN FREE ENTRY TO CARNIVAL SOLO COMPETITIONS ONLY. TICKETS WILL NEED TO BE PURCHASED FOR ALL TROUPE EVENTS. A TRYBOOKING LINK WILL BE SENT OUT APPROXIMATELY 2-4 WEEKS PRIOR TO THE EVENT.

PHOTO/VIDEO:

THE USE OF ANY TYPE OF EQUIPMENT WITH THE ABILITY TO CAPTURE PHOTO OR VIDEO IS STRICTLY PROHIBITED. FOR THE PROTECTION AND SECURITY OF THOSE PARTICIPATING AT OUR EVENTS, ABSOLUTELY NO EQUIPMENT WITH THE ABILITY TO CAPTURE PHOTO OR VIDEO ARE ALLOWED DURING A PERFORMANCE ON STAGE.

RE-PERFORMANCE:

RE-PERFORMANCE IS AT THE DISCRETION OF THE DIRECTOR. A PERFORMER WILL BE ALLOWED TO RE-PERFORM ANY NUMBER WITHOUT PENALTY IF IT IS INTERRUPTED BY A TECHNICAL ERROR ON THE PART OF CARNIVAL. PROMPTING FROM THE SIDES OF THE STAGE IS NOT ALLOWED WHILST A COMPETITOR IS PERFORMING - WITH THE EXCEPTION OF THE BABIES DANCE SECTIONS. THIS WILL LEAD TO DISQUALIFICATION.

RULES & REGULATIONS

SECTIONS:

IF INSUFFICIENT ENTRANTS IN A SECTION, THE COMMITTEE RESERVES THE RIGHT TO AMEND OR COMBINE A SECTION AT THEIR DISCRETION. WE WILL NOT CANCEL ANY SECTIONS UNLESS ABSOLUTELY NECESSARY, RATHER WE WILL COMBINE INTO ANOTHER SECTION. CHANGES TO THE RUNNING ORDER OF THE PROGRAM WILL BE LEFT TO THE DISCRETION OF CARNIVAL DANCE CHALLENGE COMMITTEE.

ATTENDEES:

ALL ATTENDEES, PARTICIPATING TEACHERS, DANCERS, PARENTS AND FRIENDS ARE EXPECTED TO DISPLAY GOOD SPORTSMANSHIP. PERSONS NOT COMPLYING WITH THIS RULE WILL BE IMMEDIATELY DISQUALIFIED AND WILL LOSE FUTURE PRIVILEGES TO COMPETE AT A CARNIVAL EVENT. OUR FOCUS IS ALWAYS ON THE DANCERS' BEST PERFORMANCE AND A SAFE AND SUPPORTIVE ATMOSPHERE.

TAP SHOES:

TAP COVERS ARE REQUIRED AT ALL TIMES WHEN INSIDE THE BUILDING. THIS RULE WILL BE STRICTLY ENFORCED.

AWARDS:

AWARDS WILL BE ANNOUNCED AT THE END OF EACH SESSION. ALL PERFORMERS WILL BE ASKED TO COME BACK ONTO THE STAGE FOR THE AWARD CEREMONY.

REGULATIONS:

CARNIVAL RESERVES THE RIGHT TO CANCEL, MOVE OR EXTEND ANY COMPETITION IN ACCORDANCE WITH THE RESPONSE TO THE NUMBER OF ENTRIES OR UNFORESEEN CIRCUMSTANCES. IN CASE OF CANCELLATION, ALL FUNDS WILL BE RETURNED PROMPTLY ONE TO TWO WEEKS OUT OF THE EVENT. CARNIVAL WILL NOT RELEASE SCORES FROM ALL PARTICIPATING STUDIOS/ENTITIES TO ANY ONE STUDIO.

RULES & REGULATIONS

LIABILITY:

CARNIVAL, ITS STAFF, AND THE SITE OF THE CONVENTION OR COMPETITION WILL NOT BE RESPONSIBLE FOR ANY ACCIDENT OR INJURY. ALL COMPETITORS AND SPECTATORS ENTER AT THEIR OWN RISK. NO RESPONSIBILITY WILL BE TAKEN FOR ANY ACCIDENT, INJURY, OR LOSS OF PROPERTY. THIS ALSO APPLIES TO CARS PARKED IN THE GROUNDS OF THE VENUE.

PUBLIC RIGHTS:

ALL PARTICIPANTS IN OUR COMPETITIONS AT THE PRELIMINARY OR NATIONAL LEVEL GIVE THEIR PERMISSION FOR ANY PHOTOGRAPH OR VIDEO THAT IS TAKEN OF THEM TO BE USED IN THE PROMOTION OF CARNIVAL, INCLUDING THE RIGHTS OF NEWSPAPERS, BROCHURES, WEBSITES, SOCIAL MEDIA, CABLE AND TV ADVERTISING. IF YOU DO NOT WISH FOR YOUR CHILD TO BE INCLUDED IN ABOVE PROMOTIONAL MATERIAL PLEASE EMAIL CARNIVALDANCECHALLENGE@GMAIL.COM

CARNIVAL DANCE CHALLENGE SHALL DECIDE ON ANY MATTER NOT COVERED IN THESE RULES. IT'S DECISION IN ANY QUESTION OR DISPUTE WILL BE FINAL. ANY RULES MAY BE AMENDED AT THE DISCRETION OF THE COMMITTEE.

BY REGISTERING ONLINE FOR ANY CARNIVAL EVENT, THE STUDIO AND ITS TEACHERS ACKNOWLEDGE THAT THEY HAVE READ AND UNDERSTAND THE RULES AND REGULATIONS OF THE EVENT, AND THAT THEY IN TURN HAVE INFORMED ALL PARENTS AS TO THE SAME REQUIREMENTS. ONCE A STUDIO SUBMITS ITS ENTRIES TO CARNIVAL, THE COMPANY ACKNOWLEDGES YOUR UNDERSTANDING OF THE RULES AND THE LIABILITY CLAUSE PUT IN PLACE AT ALL EVENTS.

FREQUENTLY ASKED QUESTIONS

IS THE FIRST YEAR ON STAGE CATEGORY SPECIFIC TO GENRE?

NO, LEVELS FOR FIRST YEAR ON STAGE ARE NOT GENRE SPECIFIC. THIS LEVEL IS JUST FOR DANCERS NEW TO COMPETING IN SOLOS AND ARE IN THEIR FIRST 12 MONTHS OF COMPETING IN ALL SOLOS.

CAN WE REGISTER ADDITIONAL ENTRIES AT THE EVENT?

ALL ENTRIES NEED TO BE REGISTERED AND PAID FOR AT LEAST 2 WEEKS PRIOR TO THE EVENT AS WE NEED TO UPDATE THE LIVE PROGRAM AND HAVE MUSIC UPLOADED IN ADVANCE. IF THERE IS SPACE IN THE SCHEDULE WE CAN TAKE LATE ENTRIES ON THE DAY.

CAN I DECIDE THE CHAMPS ROUTINE AT THE EVENT?

WE NEED THE DANCERS CHAMPIONSHIP ROUTINE DETERMINED PRIOR TO THE EVENT AS WE NEED YOUR MUSIC UPLOADED IN ADVANCE.

CAN I PERFORM A VOCAL ROUTINE?

YES, VOCAL ROUTINES ARE ALLOWED TO ENTER. WE RECOMMEND ENTERING THESE IN THE ANY STYLE SECTION. YOU MAY ALSO CHOOSE TO PERFORM A VOCAL ROUTINE IN THE CHAMPS SECTION IF YOU WISH. PLEASE NOTE THAT A MICROPHONE IS NOT ALWAYS GUARANTEED. AVAILABILITY DEPENDS ON THE VENUE AND THE EQUIPMENT PROVIDED. IN SOME CASES, WE MAY BE ABLE TO OFFER A MICROPHONE IF POSSIBLE.

CAN A PARENT OR TEACHER HELP WITH PLACING PROPS ON STAGE?

YES, A PARENT OR TEACHER CAN HELP PLACE PROPS ON STAGE AND REMOVE THEM. WE ASK THAT THIS IS DONE AS FAST AND EFFICIENTLY AS POSSIBLE.



FREQUENTLY ASKED QUESTIONS

DO I HAVE TO MOVE UP TO ELITE IF I WON 1ST PLACE BUT WAS THE ONLY COMPETITOR IN THE SECTION?

NO, YOU ONLY HAVE TO MOVE UP TO ELITE IF YOU WON 1ST PLACE IN A SECTION WITH 4 OR MORE DANCERS IN IT. IF THERE WERE 3 OR LESS DANCERS IN THE SECTION, YOU CAN REMAIN IN PROTEGE.

I JUST HAD MY BIRTHDAY, DO I NEED TO MOVE UP AN AGE GROUP?

YOUR AGE GROUP IS BASED ON THE AGE YOU WERE ON THE 1ST JANUARY 2026. FOR EXAMPLE, YOU WERE 14 YEARS OLD ON 1ST JAN 2026 BUT TURNED 15 ON THE 12TH JAN, YOU WILL REMAIN IN THE 14 YEARS & UNDER AGE GROUP.

DO I HAVE TO WIN 1ST PLACE AT A CARNIVAL EVENT TO MOVE UP LEVELS?

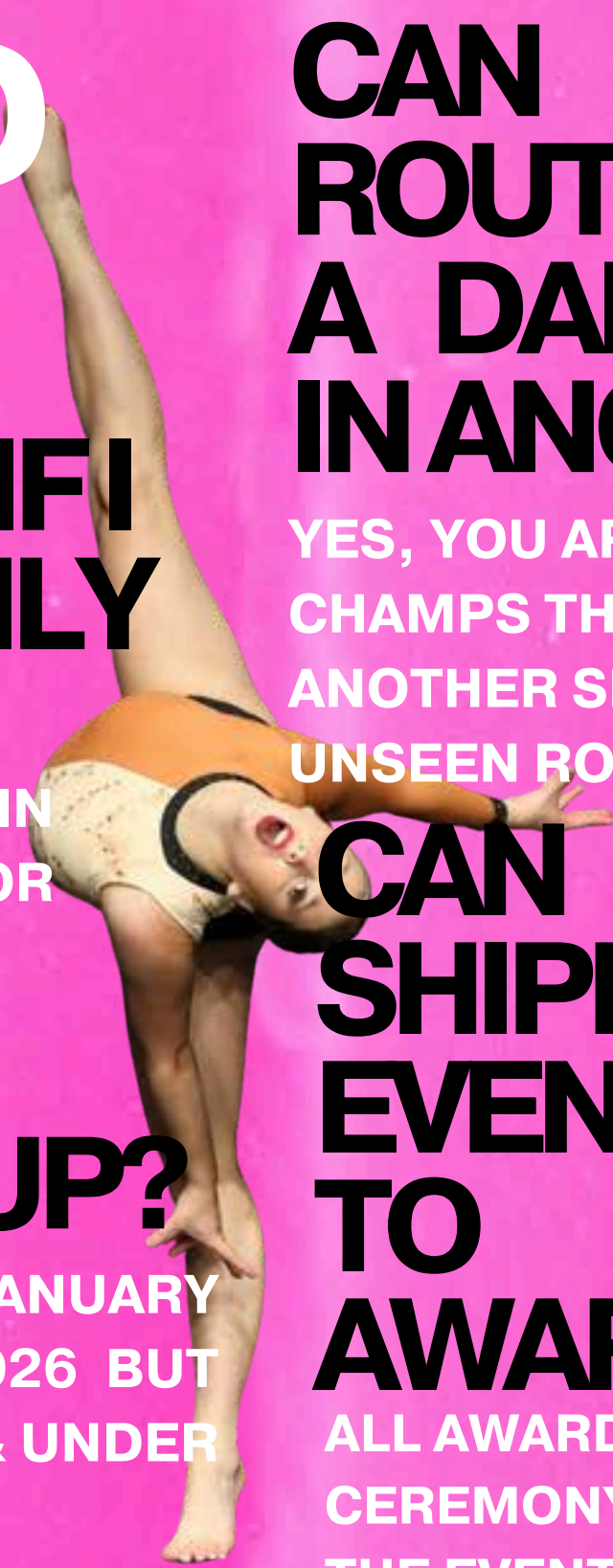
NO, IT DOESN'T HAVE TO BE A CARNIVAL COMPETITION. IF YOU WIN 1ST PLACE AT ANY COMPETITION WITH 3 OR MORE IN THE SECTION WITHIN THE PAST 2 YEARS, YOU WILL NEED TO MOVE UP TO ELITE.

CAN MY CHAMPS ROUTINE BE A REPEAT OF A DANCE I PERFORMED IN ANOTHER SECTION?

YES, YOU ARE WELCOME TO REPEAT A ROUTINE FOR CHAMPS THAT HAS ALREADY BEEN PERFORMED IN ANOTHER SECTION. YOU CAN ALSO PERFORM AN UNSEEN ROUTINE, IT IS COMPLETELY UP TO YOU.

CAN MY AWARD BE SHIPPED AFTER THE EVENT IF I AM UNABLE TO STAY FOR THE AWARDS CEREMONY?

ALL AWARDS MUST BE COLLECTED AT THE AWARDS CEREMONY, WE CANNOT ARRANGE SHIPMENT AFTER THE EVENT. IN SOME CASES, WE CAN ARRANGE FOR YOU TO PICK YOUR AWARD UP AT A LATER TIMESLOT/THE NEXT DAY WHERE POSSIBLE. OUR TEAM TRAVEL INTERSTATE FOR MOST EVENTS, MAKING IT CHALLENGING TO ARRANGE THIS. ANY VOUCHERS WON FOR THE MAJOR AWARDS, CAN BE EMAILED TO YOU.



CARNIVAL

DANCE CHALLENGE

THANK YOU

REGISTER NOW
APP.CARNIVALDANCE.COM.AU

ALL ENQUIRIES
CONTACT@CARNIVALDANCE.COM.AU



dance
train

rac n roll

PS
Pip & Spar
COSTUMES

THREE WARRIORS


FUTURE
STARS MEDIA

AMPA
ACADEMY OF MUSIC AND PERFORMING ARTS

BYS®

e
ETTINGSHAUSENS

JRD

EN POINTE
PRODUCTIONS

TOTALLY
DAZZLED


SHIRE DANCE
WORKSHOPS

REMINGTON
EST. NEW YORK 1937

I L L A S H
By Illy

Divine  Dance
TWEED

B / ST.

THE
GIST STRATEGY

DYN★MITE
STUDIOS AUSTRALIA

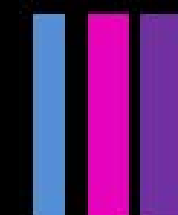

moxipak.
DANCE

teysha.

TP
World TOURS

STUDIO 7
DANCEWEAR

iPlay



Diamond Dancewear
Designer Dance Costumes & Clothing

VDF
DANCE
FESTIVAL



DARGIE
Fulltime